



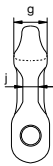
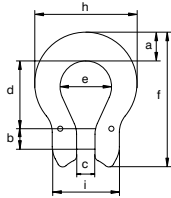
Green Pin® Omega Link EN 1677-1 GR8

Grade 8 omega link EN 1677-1

- **Material:** alloy steel, grade 8, quenched and tempered
- **Safety factor:** MBL equals 4 x WLL
- **Standard :** EN 1677-1
- **Finish:** painted yellow (J), red (R) or white
- **Temperature range:** -40°C up to +200°C
- **Certification:** 2.1 2.2 3.1 MPI^b DGUV



CO



for chain diameter		working load limit	width	diameter pin	width	length inside	width bow	length outside	thickness	width outside	width outside	thickness	weight each
mm	inch		a mm	b mm	c mm	d mm	e mm	f mm	g mm	h mm	i mm	j mm	
5	³ / ₁₆	0.8	14	6	7	26	20	53	13	41	28	6	0.07
6	⁷ / ₃₂	1.12	14	8	7	25	20	53	13	41	28	6	0.07
7-8	¹ / ₄ - ⁵ / ₁₆	2	20	9	9	34	24	71	16	55	32	9	0.20
10	³ / ₈	3.2	19	13	12	40	31	82	17	63	42	11	0.28
13	¹ / ₂	5.4	25	16	15	51	40	106	20	84	54	14	0.64
16	⁵ / ₈	8.2	32	20	19	64	48	132	25	104	68	17	1.28
18-20	³ / ₄	12.8	38	24	23	80	59	163	30	126	82	22	2.25



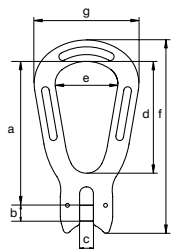
Green Pin® Pear Shaped Link EN 1677-4 GR8

Grade 8 pear shaped link EN 1677-4

- **Material:** alloy steel, grade 8, quenched and tempered
- **Safety factor:** MBL equals 4 x WLL
- **Standard:** EN 1677-4
- **Finish:** painted yellow (J), red (R) or white
- **Temperature range:** -40°C up to +200°C
- **Certification:** 2.1 2.2 3.1 MPI^b



MP



for chain diameter		working load limit	length	diameter pin	width	length inside	width inside	length	width outside	weight each
mm	inch		a mm	b mm	c mm	d mm	e mm	f mm	g mm	
5	³ / ₁₆	0.8	85	6	7	64	33	109	55	0.14
6	⁷ / ₃₂	1.12	84	8	7	64	33	109	55	0.14
7-8	¹ / ₄ - ⁵ / ₁₆	2	101	9	9	77	40	132	69	0.34
10	³ / ₈	3.2	125	13	12	97	50	165	84	0.77
13	¹ / ₂	5.4	161	16	15	125	66	213	110	1.62
16	⁵ / ₈	8.2	198	20	19	154	84	262	140	2.72
18-20	³ / ₄	12.8	253	24	23	198	104	331	166	4.28