

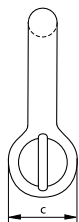
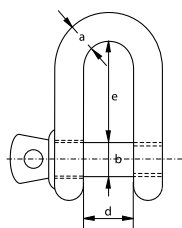
C

Yellow Pin Shackles

Dee shackle with screw collar pin



G-3151



- **Material:** bow and pin high tensile steel, grade 6
- **Standard:** generally to US Fed. Spec. RR-C-271
- **Finish:** hot dipped galvanized
- **Certification:** 2.1 2.2 CE
- **Note:** import quality

working load limit	diameter bow	diameter pin	diameter eye	width inside	length inside	weight each
t	a mm	b mm	c mm	d mm	e mm	kg
0.33	5	6	12	9.5	19	0.03
0.5	6	8	16	12	22	0.04
0.75	8	10	19	13.5	26	0.08
1	10	11	23	17	32	0.13
1.5	11	13	27	19	37	0.2
2	13	16	30	20	41	0.28
3.25	16	19	38	27	51	0.57
4.75	19	22	46	32	60	1.19
6.5	22	25	53	36	71	1.43
8.5	25	28	61	43	81	2.16
9.5	28	32	68	46	90	3.06
12	32	35	76	51	100	4.11
13.5	35	38	84	57	111	5.28
17	38	42	92	60	122	6.69
25	45	50	106	73	146	12.14

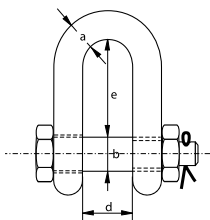
C

Yellow Pin Shackles

Dee shackle with safety bolt



G-3153



- **Material:** bow and pin high tensile steel, grade 6
- **Standard:** generally to US Fed. Spec. RR-C-271
- **Finish:** hot dipped galvanized
- **Certification:** 2.1 2.2 CE
- **Note:** import quality

working load limit	diameter bow	diameter pin	diameter eye	width inside	length inside	weight each
t	a mm	b mm	c mm	d mm	e mm	kg
2	13	16	30	20	41	0.33
3.25	16	19	38	27	51	0.62
4.75	19	22	46	32	60	1.02
6.5	22	25	53	36	71	1.49
8.5	25	28	61	43	81	2.26
9.5	28	32	68	46	90	3.2
12	32	35	76	51	100	4.91
13.5	35	38	84	57	111	5.84
17	38	42	92	60	122	8.4
25	45	50	106	73	146	11.9