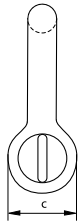
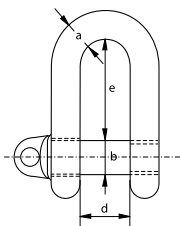


C

S-3351
G-3351

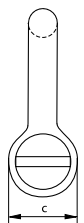
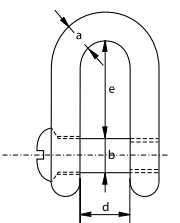
Shackles generally to DIN 82101 type A

Dee shackle with screw collar pin

- **Material:** bow and pin high tensile steel, grade 4
- **Safety Factor:** MBL equals 5 x WLL
- **Standard:** generally to DIN 82101 type A
- **Finish:** hot dipped galvanized or self coloured
- **Certification:** 2.1 2.2 CE
- **Note:** shackle no. 0.1 is electro-galvanized and will not have any markings as it is too small

no.	working load limit	diameter bow	diameter pin	diameter eye	width inside	length inside	weight each
	t	a mm	b mm	c mm	d mm	e mm	kg
0.1	0.1	5	5	10	7	15.5	0.02
0.16	0.16	6	6	12	8	18	0.02
0.25	0.25	8	8	16	11	24	0.05
0.4	0.4	10	10	20	14	30	0.1
0.6	0.63	12	12	24	17	36	0.18
1	1	13	16	32	21	49	0.3
1.6	1.6	16	20	40	27	61	0.57
2	2	20	22	44	30	67	0.98
2.5	2.5	22	24	48	33	73	1.3
3	3.15	25	27	54	38	83.5	1.85
4	4	28	30	60	42	91	2.53
5	5	32	36	72	47	111	4
6	6.3	36	39	78	53	119.5	5.3
8	8	41	45	90	60	139.5	7.9
10	10	44	48	96	66	147	10
12	12	49	52	104	73	158	13.5
16	16	55	60	120	81	185	19.2
20	20	61	68	136	90	211	28
25	25	67	72	144	100	221	34

C

S-3352
G-3352

Shackles generally to DIN 82101 type B

Dee shackle with counter sunk screw pin

- **Material:** bow and pin high tensile steel, grade 4
- **Safety Factor:** MBL equals 5 x WLL
- **Standard:** generally to DIN 82101 type B
- **Finish:** hot dipped galvanized or self coloured
- **Certification:** 2.1 2.2 CE
- **Note:** shackle no. 0.1 is electro-galvanized and will not have any markings as it is too small

no.	working load limit	diameter bow	diameter pin	diameter eye	width inside	length inside	weight each
	t	a mm	b mm	c mm	d mm	e mm	kg
0.1	0.1	5	5	10	7	15.5	0.01
0.16	0.16	6	6	12	8	18	0.02
0.25	0.25	8	8	16	11	24	0.05
0.4	0.4	10	10	20	14	30	0.09
0.6	0.63	12	12	24	17	36	0.17
1	1	13	16	32	21	49	0.29
1.6	1.6	16	20	40	27	61	0.54
2	2	20	22	44	30	67	0.98
2.5	2.5	22	24	48	33	73	1.23
3	3.15	25	27	54	38	83.5	1.8
4	4	28	30	60	42	91	2.6
5	5	32	36	72	47	111	3.8
6	6.3	36	39	78	53	119.5	5.2
8	8	41	45	90	60	139.5	7.6
10	10	44	48	96	66	147	9.7