

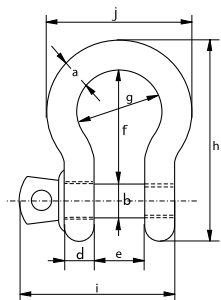


Green Pin Super® Bow Shackle SC

Grade 8 bow shackle with screw pin



G-5261



- **Material:** bow and pin alloy steel, grade 8, quenched and tempered
- **Safety Factor:** MBL equals 5 x WLL
- **Standard:** ASME B30.26 and meets performance requirements of US Fed. Spec. RR-C-271 Type IVA Class 2, grade B
- **Finish:** hot dipped galvanized
- **Temperature Range:** -20°C up to +200°C
- **Certification:** [2.1](#) [2.2](#) [3.1](#) [MTC[®]](#) [CE](#) [ABS PDA](#) [ABS MA](#)

working load limit	diameter body	diameter pin	diameter eye	width eye	width inside	length inside	width bow	length	length bolt	width	weight each
t	a mm	b mm	c mm	d mm	e mm	f mm	g mm	h mm	i mm	j mm	kg
3.3	13.5	16	34	13	22	51	32	89	73	58	0.36
5	16	19	40	16	27	64	43	110	89	75	0.63
7	19	22	46	19	31	76	51	129	103	89	1.01
9.5	22	25	52	22	36	83	58	144	119	102	1.5
12.5	25	28	59	25	43	95	68	164	137	118	2.21

In inch

working load limit	diameter body	diameter pin	diameter eye	width eye	width inside	length inside	width bow	length	length bolt	width	weight each
t	a inch	b inch	c inch	d inch	e inch	f inch	g inch	h inch	i inch	j inch	lbs
3.3	1/2	5/8	1 11/32	1/2	7/8	2	1 1/4	3 1/2	2 7/8	2 9/32	0.79
5	5/8	3/4	1 9/16	5/8	1 1/16	2 17/32	1 11/16	4 11/32	3 1/2	2 15/16	1.38
7	3/4	7/8	1 13/16	3/4	1 7/32	3	2	5 3/32	4 1/16	3 1/2	2.22
9.5	7/8	1	2 1/16	7/8	1 13/32	3 9/32	2 9/32	5 21/32	4 11/16	4 1/32	3.31
12.5	1	1 1/8	2 5/16	31/32	1 11/16	3 3/4	2 11/16	6 15/32	5 13/32	4 21/32	4.86

CAD RFID

