



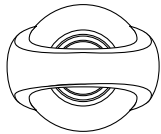
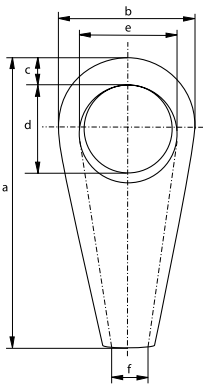
# Green Pin® Short Bow Socket

## Closed spelter socket

- **Material:** cast alloy steel
- **Finish:** hot dipped galvanized
- **Certification:** 2.1 2.2 3.1 CE



G-6416



minimum breaking load	rope size	length	width	thicknes bow	length eye	width eye	opening	weight each
t	mm	a mm	b mm	c mm	d mm	e mm	f mm	kg
140	31-36	262	132	38	83	75	39	7
160	37-42	305	152	40	103	92	44	10
200	43-48	356	178	48	120	112	51	16
250	49-54	390	200	54	132	120	59	21
320	55-60	440	220	62	148	135	64	28
400	61-68	498	250	68	165	150	73	44
500	69-75	540	274	75	178	164	79	53
600	76-80	585	295	76	195	175	89	70
700	81-86	625	320	82	216	194	92	81
800	87-93	670	350	92	220	202	99	112
900	94-102	700	375	100	235	215	108	130
1000	108-115	800	410	110	270	240	120	182

In inch

minimum breaking load	rope size	length	width	thicknes bow	length eye	width eye	opening	weight each
t	inch	a inch	b inch	c inch	d inch	e inch	f inch	lbs
140	1 1/4 - 1 3/8	10 5/16	5 3/16	1 1/2	3 9/32	2 15/16	1 17/32	15.4
160	1 1/2 - 1 5/8	12	5 31/32	1 9/16	4 1/16	3 5/8	1 23/32	22.1
200	1 3/4 - 1 7/8	14 1/32	7	1 7/8	4 23/32	4 13/32	2	35.3
250	2 - 2 1/8	15 11/32	7 7/8	2 1/8	5 3/16	4 23/32	2 5/16	46.3
320	2 1/4 - 2 3/8	17 5/16	8 21/32	2 7/16	5 13/16	5 5/16	2 17/32	61.7
400	2 1/2 - 2 5/8	19 19/32	9 27/32	2 11/16	6 1/2	5 29/32	2 7/8	97
500	2 3/4 - 2 7/8	21 1/4	10 25/32	2 15/16	7	6 15/32	3 1/8	116.9
600	3 - 3 1/8	23 1/32	11 5/8	3	7 11/16	6 7/8	3 1/2	154.3
700	3 1/4 - 3 3/8	24 19/32	12 19/32	3 7/32	8 1/2	7 5/8	3 5/8	178.6
800	3 1/2 - 3 5/8	26 3/8	13 25/32	3 5/8	8 21/32	7 15/16	3 29/32	246.9
900	3 3/4 - 4	27 9/16	14 3/4	3 15/16	9 1/4	8 15/32	4 1/4	286.6
1000	4 1/4 - 4 1/2	31 1/2	16 5/32	4 11/32	10 5/8	9 7/16	4 23/32	401.3