

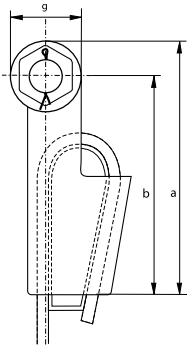


Green Pin® Open Wedge Socket BN

Open wedge socket with safety bolt



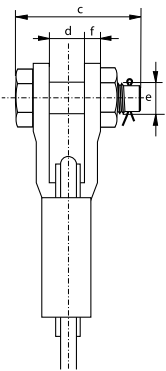
G-6423



- **Material:** high tensile steel
- **Standard:** generally to EN 13411-6
- **Finish:** hot dipped galvanized
- **Temperature Range:** -20°C up to +200°C
- **Certification:** 2.1 2.2 3.1 CE

number	minimum breaking load	diameter wire rope	length	length to center pin	width	width inside	diameter pin	thickness side plates	diameter eye	weight each
	t	mm	a mm	b mm	c mm	d mm	e mm	f mm	g mm	kg
0.25	8	7 - 8	128	110	69	18	16	9	36	0.8
0.5	12	9 - 10	165	142	83	20.5	20	11	46	1.5
1	20	11 - 13	175	146	101	25	25	12	57	2.4
2	25	14 - 16	211	176	124	31	30	15	70	4.8
3	40	18 - 19	252	212	138	38	35	16	80	8.3
4	55	20 - 22	288	240	148	44	41	19	95	11
5	75	24 - 26	329	274	176	51	50	22	110	17.9
6	90	27 - 29	375	310	193	57	57	25	130	21
7	110	30 - 32	423	350	210	63	63	28	146	33
8	125	34 - 36	474	400	216	69	65	28	148	42
9	150	37 - 39	527	450	230	76	70	30	153	52
10	170	40 - 42	580	500	244	76	77	33	160	73

In inch



number	minimum breaking load	diameter wire rope	length	length to center pin	width	width inside	diameter pin	thickness side plates	diameter eye	weight each
	t	inch	a inch	b inch	c inch	d inch	e inch	f inch	g inch	lbs
0.25	8	$\frac{5}{16}$	$5 \frac{1}{32}$	$4 \frac{5}{16}$	$2 \frac{23}{32}$	$\frac{23}{32}$	$\frac{5}{8}$	$\frac{11}{32}$	$1 \frac{7}{16}$	1.76
0.5	12	$\frac{3}{8}$	$6 \frac{1}{2}$	$5 \frac{19}{32}$	$3 \frac{9}{32}$	$\frac{13}{16}$	$\frac{25}{32}$	$\frac{7}{16}$	$1 \frac{13}{16}$	3.31
1	20	$\frac{1}{2}$	$6 \frac{7}{8}$	$5 \frac{3}{4}$	$3 \frac{31}{32}$	1	1	$\frac{15}{32}$	$2 \frac{1}{4}$	5.29
2	25	$\frac{5}{8}$	$8 \frac{5}{16}$	$6 \frac{29}{32}$	$4 \frac{7}{8}$	$1 \frac{1}{4}$	$1 \frac{3}{16}$	$\frac{19}{32}$	$2 \frac{3}{4}$	10.58
3	40	$\frac{3}{4}$	$9 \frac{15}{16}$	$8 \frac{11}{32}$	$5 \frac{7}{16}$	$1 \frac{17}{32}$	$1 \frac{3}{8}$	$\frac{5}{8}$	$3 \frac{5}{32}$	18.3
4	55	$\frac{7}{8}$	$11 \frac{11}{32}$	$9 \frac{1}{2}$	$5 \frac{13}{16}$	$1 \frac{3}{4}$	$1 \frac{5}{8}$	$\frac{3}{4}$	$3 \frac{3}{4}$	24.3
5	75	1	$12 \frac{15}{16}$	$10 \frac{25}{32}$	$6 \frac{29}{32}$	2	$1 \frac{31}{32}$	$\frac{7}{8}$	$4 \frac{5}{16}$	39.5
6	90	$1 \frac{1}{8}$	$14 \frac{3}{4}$	$12 \frac{3}{16}$	$7 \frac{19}{32}$	$2 \frac{1}{4}$	$2 \frac{1}{4}$	1	$5 \frac{1}{8}$	46.3
7	110	$1 \frac{1}{4}$	$16 \frac{11}{16}$	$13 \frac{25}{32}$	$8 \frac{9}{32}$	$2 \frac{1}{2}$	$2 \frac{1}{2}$	$1 \frac{1}{8}$	$5 \frac{3}{4}$	72.8
8	125	$1 \frac{3}{8}$	$18 \frac{11}{16}$	$15 \frac{3}{4}$	$8 \frac{17}{32}$	$2 \frac{23}{32}$	$2 \frac{9}{16}$	$1 \frac{1}{8}$	$5 \frac{13}{16}$	92.6
9	150	$1 \frac{1}{2}$	$20 \frac{3}{4}$	$17 \frac{3}{4}$	$9 \frac{3}{32}$	3	$2 \frac{3}{4}$	$1 \frac{3}{16}$	6	114.6
10	170	$1 \frac{5}{8}$	$22 \frac{13}{16}$	$19 \frac{23}{32}$	$9 \frac{5}{8}$	3	$3 \frac{1}{32}$	$1 \frac{5}{16}$	$6 \frac{9}{32}$	160.9

CAD