



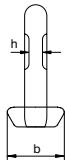
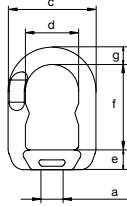
Green Pin® Eye Nut S/S-GR5

Grade 5 stainless steel eye nut

- **Material:** AISI 316L, grade 5
- **Safety factor:** MBL equals 5 x WLL
- **Finish:** polished
- **Temperature range:** -40°C up to +200°C
- **Certification:** 2.1 2.2 3.1 MPI¹ CE



ELI



working load limit	diameter thread	diameter base	width	width inside	thickness base	length inside	diameter	thickness	weight each
t	a mm	b mm	c mm	d mm	e mm	f mm	g mm	h mm	kg
0.12	M6 x 1.00	31	51	30	14	44	11	6	0.15
0.2	M8 x 1.25	31	51	30	14	44	11	6	0.15
0.4	M10 x 1.50	31	51	30	14	44	11	6	0.15
0.6	M12 x 1.75	39	56	32	15	48	12	6	0.23
0.8	M14 x 2.00	39	56	32	15	48	12	6	0.23
1	M16 x 2.00	44	65	37	17	60	14	8	0.37
1.5	M18 x 2.50	44	65	37	17	60	14	8	0.37
2	M20 x 2.50	44	65	37	17	60	14	8	0.37
2.5	M22 x 2.50	52	79	48	21	75	16	11	0.63
3	M24 x 3.00	52	79	48	21	75	16	11	0.63
3.5	M27 x 3.00	52	79	48	21	75	16	11	0.63



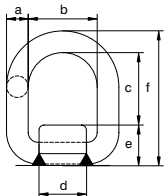
Green Pin® Weld-On Transport Ring S/S-GR5

Grade 5 stainless steel weld-on transport ring

- **Material:** AISI 316, grade 5
- **Safety factor:** MBL equals 4 x WLL
- **Finish:** polished
- **Temperature range:** -40°C up to +200°C
- **Certification:** 2.1 2.2 3.1 CE
- **Note:** regarding the selection of welding material, respecting parent and PASI materials, please refer to EN 3581 for manual metal arc welding and to EN ISO 14343 for arc welding



PASI



working load limit	diameter	width inside	length inside	length base	height base	length	weight each
t	a mm	b mm	c mm	d mm	e mm	f mm	kg
0.75	13	40	42	35	28	83	0.4
1.25	18	45	48	42	33	99	0.8
3.2	22	55	57	49	42	121	1.4
5	26	70	67	64	50	143	2.5

INFO