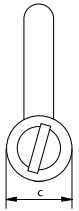
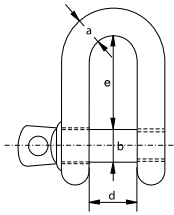


C



R-7821



Shackles, dee shackles with screw pin

Dee shackles with screw pin

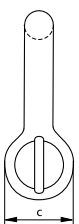
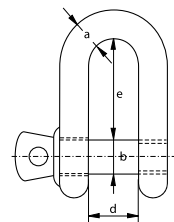
- **Material:** AISI 316
- **Safety factor:** MBL equals 6 x WLL
- **Standard:** generally to DIN 82102
- **Finish:** polished
- **Certification:** 2.1 2.2 3.1 CE
- **Note:** marked with WLL, CE and manufacturer identification symbol (VBS), except for 4 mm as it is too small

working load limit	diameter bow	diameter pin	diameter eye	width inside	length inside	weight per 100 pcs
t	a mm	b mm	c mm	d mm	e mm	kg
-	4	4	8	8	16	0.9
0.12	5	5	10	10	20	1.6
0.15	6	6	12	12	24	2.6
0.3	8	8	16	16	32	5.6
0.4	10	10	20	20	40	13
0.6	12	12	24	24	48	20
1	16	16	32	32	64	48
1.5	20	20	40	40	80	78
2	22	22	44	44	88	127
3	25	25	50	50	100	184
3.6	28	28	54	56	106	250

C



R-7823



Shackles, dee shackles with safety bolt

Dee shackles with safety bolt

- **Material:** AISI 316
- **Safety factor:** MBL equals 6 x WLL
- **Finish:** polished
- **Certification:** 2.1 2.2 3.1 CE
- **Note:** marked with WLL, CE, traceability code and manufacturer identification symbol (VBS)

working load limit	diameter bow	diameter pin	diameter eye	width inside	length inside	weight per 100 pcs
t	a mm	b mm	c mm	d mm	e mm	kg
0.3	8	8	16	16	32	7.1
0.4	10	10	19	20	40	14
0.6	12	12	24	25	48	23.6
1	16	16	31	32	64	54.5
1.5	19	19	38	38	76	96
2	22	22	43	44	85	142
3	25	25	49	50	95	209