



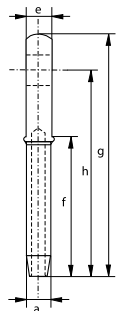
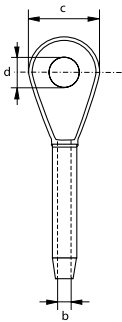
Green Pin® Closed Swage Socket

Closed type

- **Material:** drop forged steel C-1035
- **Finish:** self coloured
- **Certification:** 2.1



S-6415



diameter rope	diameter before swage	diameter after swage		diameter inside	diameter	diameter eye	thickness	length	length	length	weight each
		min	max								
mm	a	a	a	b	c	d	e	f	g	h	kg
6	13	10.9	11.7	7	37	19	13	54	111	89	0.15
8	20	17.2	18.0	9	43	22	17	81	140	114	0.35
10	20	17.2	18.0	10	43	22	17	81	140	114	0.33
11	25	22.0	23.1	12	51	27	22	108	176	146	0.66
13	25	22.0	23.1	14	51	27	22	108	176	146	0.62
14	32	28.3	29.5	15	63	32	29	135	222	184	1.35
16	32	28.3	29.5	17	63	32	29	135	222	184	1.31
19	39	34.7	36.1	20	76	37	33	162	264	219	2.3
22	43	37.8	39.4	24	89	43	38	189	308	257	3.40
25	50	44.2	45.7	27	102	52	44	216	349	292	4.97
28	57	50.5	52.1	30	114	59	51	243	387	324	7.17
32	64	56.9	58.4	34	127	65	57	270	438	365	10.4
35	71	63.2	65.0	37	133	65	57	297	479	400	13.3
38	78	69.6	71.4	40	140	71	63	324	518	432	17.7
44	86	75.9	77.7	47	171	91	76	378	610	508	23.6
51	100	88.6	90.4	54	197	97	83	432	698	584	40.8
57	113	100.3	102.1	60	219	110	102	486	756	632	55.3
63	125	110.5	112.3	67	219	110	102	498	791	667	64.4
76	151	133.1	134.9	80	235	135	137	603	959	816	114

In inch

diameter rope	diameter before swage	diameter after swage		diameter inside	diameter	diameter eye	thickness	length	length	length	weight each
		min	max								
inch	a	a	a	b	c	d	e	f	g	h	lbs
1/4	0.495	0.428	0.460	0.272	1 7/16	3/4	1/2	2 1/8	4 3/8	3 1/2	0.35
5/16	0.770	0.678	0.710	0.339	1 11/16	7/8	11/16	3 3/16	5 1/2	4 1/2	0.77
3/8	0.770	0.678	0.710	0.406	1 11/16	7/8	11/16	3 3/16	5 1/2	4 1/2	0.73
7/16	0.982	0.865	0.910	0.484	2	1 1/16	7/8	4 1/4	6 15/16	5 3/4	1.47
1/2	0.982	0.865	0.910	0.547	2	1 1/16	7/8	4 1/4	6 15/16	5 3/4	1.38
9/16	1.257	1.115	1.160	0.609	2 1/2	1 1/4	1 1/8	5 5/16	8 3/4	7 1/4	2.90
5/8	1.257	1.115	1.160	0.672	2 1/2	1 1/4	1 1/8	5 5/16	8 3/4	7 1/4	2.80
3/4	1.545	1.365	1.420	0.796	3	1 7/16	1 5/16	6 3/8	10 3/8	8 5/8	5.16
7/8	1.700	1.490	1.550	0.938	3 1/2	1 11/16	1 1/2	7 7/16	12 1/8	10 1/8	7.40
1	1.975	1.740	1.800	1.062	4	2 1/16	1 3/4	8 1/2	13 3/4	11 1/2	11.2
1 1/8	2.245	1.990	2.050	1.188	4 1/2	2 5/16	2	9 9/16	15 1/4	12 3/4	16
1 1/4	2.525	2.240	2.300	1.328	5	2 9/16	2 1/4	10 5/8	17 1/4	14 3/8	22.7
1 3/8	2.800	2.490	2.560	1.453	5 1/4	2 9/16	2 1/4	11 11/16	18 7/8	15 3/4	29
1 1/2	3.075	2.740	2.810	1.578	5 1/2	2 13/16	2 1/2	12 3/4	20 3/8	17	37.5
1 3/4	3.385	2.990	3.060	1.859	6 3/4	3 9/16	3	14 7/8	24	20	55.7
2	3.935	3.490	3.560	2.109	7 3/4	3 13/16	3 1/4	17	27 1/2	23	90
2 1/4	4.450	3.950	4.020	2.360	8 5/8	4 5/16	4	19 1/8	29 3/4	24 7/8	125
2 1/2	4.930	4.350	4.420	2.657	8 5/8	4 5/16	4	19 5/8	31 1/8	26 1/4	142
3	5.960	5.240	5.310	3.166	9 1/4	5 5/16	5 5/8	23 3/4	37 3/4	32 1/8	252

CAD